



ERI CONSULTING, INC.

P. O. Box 2024, Tyler, Texas 75710
2026 Republic Drive, Suite A, Tyler, Texas 75701
Ph: (903) 534-5001 Fax: (903) 534-8701
TBPE Firm # F-1787
www.ericonsulting.com

May 7, 2025

FILED FOR RECORD
at 9:42 o'clock A.M.

MAY 19 2025

MARK STAPLES
County Clerk, Anderson County, Texas
By MS Clerk

Anderson County
Carey McKinney, County Judge
703 North Mallard, Suite 101
Palestine, Texas 75801
Phone: 903-723-7474
Cell: 903-724-3142
cgmckinney@co.anderson.tx.us
cc: llambright@co.anderson.tx.us

RE: ES#25-270 - Asbestos Abatement, Palestine Civic Center, 1819 Spring Street, Palestine, Texas 75803 - CLEARANCE LETTER

Dear Judge McKinney:

Air Quality Associates, Inc. (AQA) has completed the above referenced project. All work was performed in accordance with State and Federal regulations and with our Specifications.

Laboratory analysis of air samples collected during abatement procedures, and at the project's completion, indicated no significant airborne fiber concentrations were generated as a result of the abatement activities. **At the project's completion, clearance air testing indicated the areas were safe for reoccupancy, and renovation is authorized to proceed as scheduled.**

Final compliance reports and an invoice for our services will be submitted to you within the next few weeks. We have enjoyed working with you on this matter. If you have questions, or if we can be of further service to you at any time, please call us at 903-534-5001.

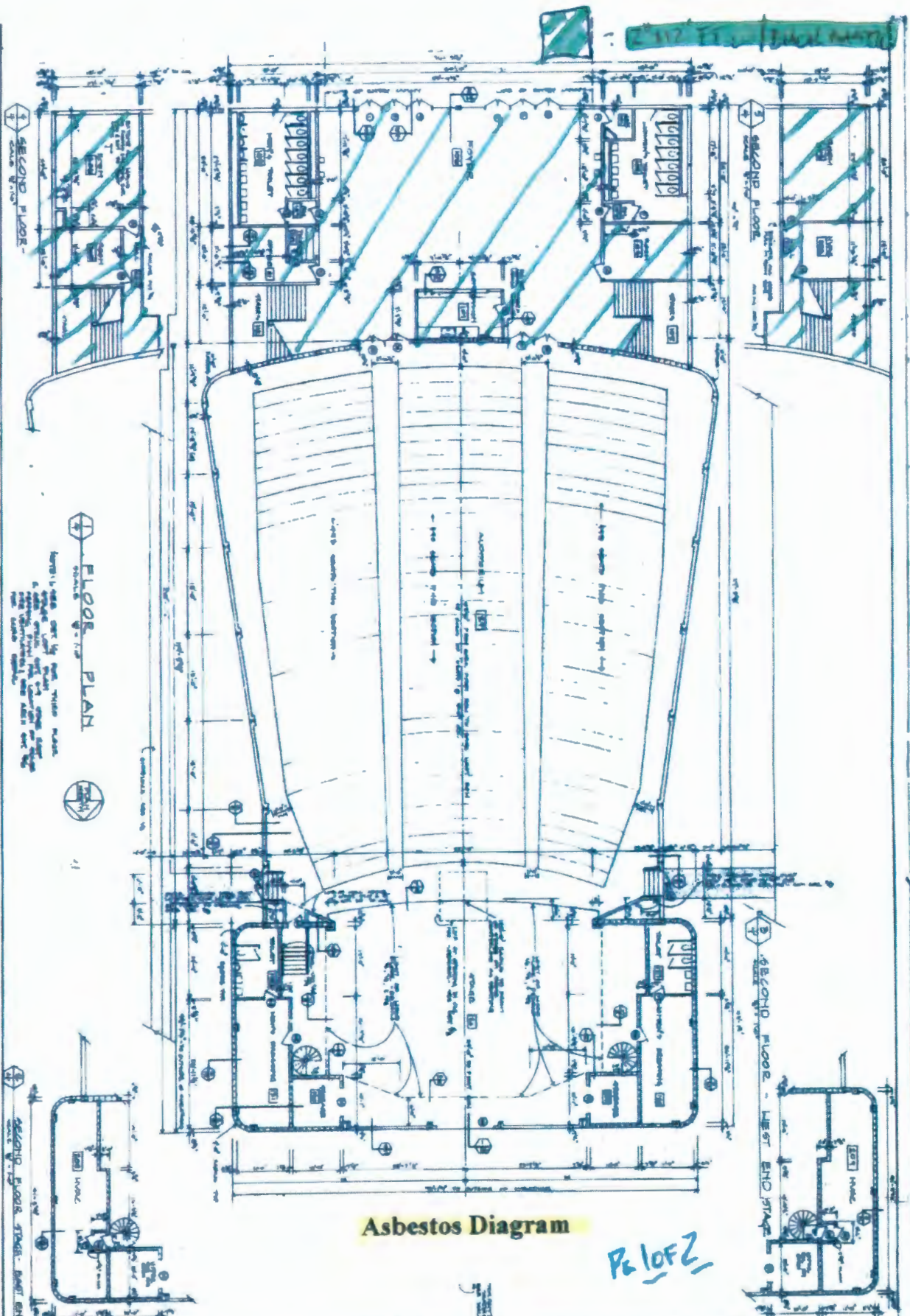


Sincerely,

Christopher L. Power, E.V.P.
TDSHS Asbestos Consultant #10-5566

CLP/kd
cc: Air Quality Associates, Inc.

Handwritten: CLP
05-19-2025



FLOOR PLAN

NOTE: THIS PLAN IS FOR THE SECOND FLOOR ONLY. ALL ROOMS AND AREAS SHOWN ON THIS PLAN ARE TO BE REMOVED. THE EXISTING FLOOR PLAN IS TO BE MAINTAINED. ALL WORK IS TO BE DONE IN ACCORDANCE WITH THE 2006 INTERNATIONAL MECHANICAL AND ELECTRICAL CODES.

Asbestos Diagram

PELOFZ

PALESTINE CIVIC CENTER
PALESTINE, TEXAS

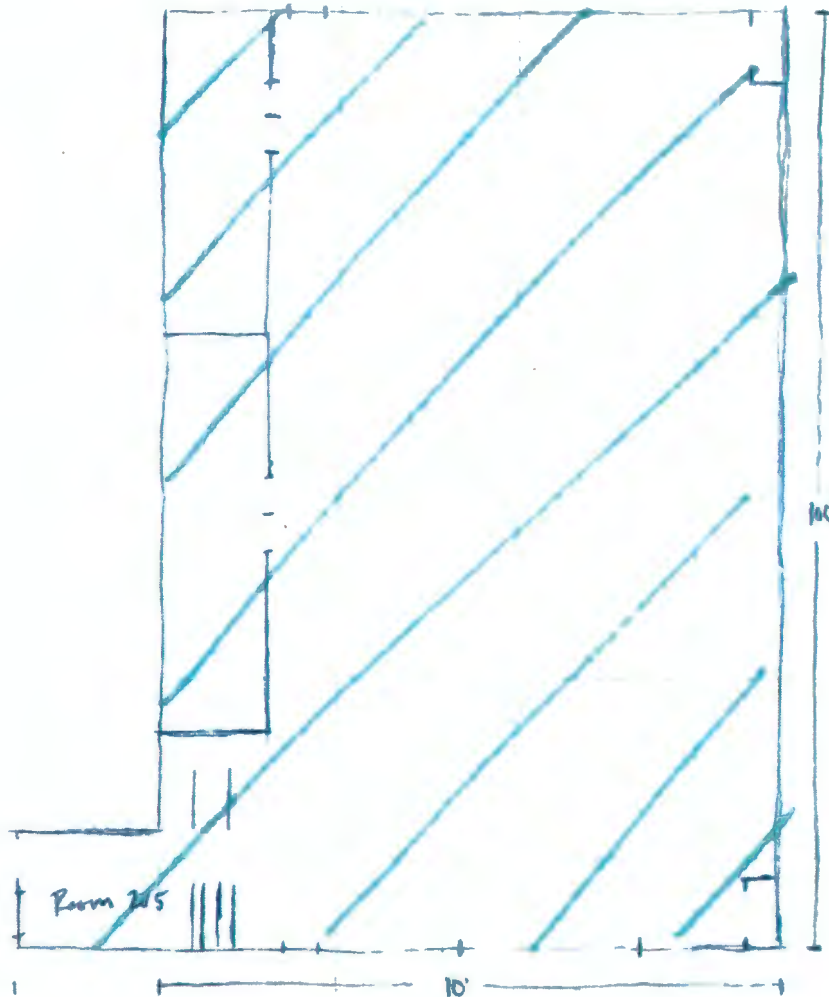
T&B MURPHY & ASSOCIATES
ARCHITECTS PLANNERS
PALESTINE TEXAS



ERI Consulting, Inc.
2026 Republic Drive, Suite A
Tyler, Texas 75701
Phone 903-534-5001 - Fax 903-534-8701
www.ericonsulting.com
"Over 30 Years of Excellence"

ES NO. 21-993 SHEET 2 OF 2
CLIENT FITZPATRICK LIA
LOCATION 1819 SPRING ST., ARLINGTON, TX
PREPARED BY IR DATE 12/13/21

Add on



 = 12 (12' W) Black Matte

Asbestos Diagram

Pg 2 of 2